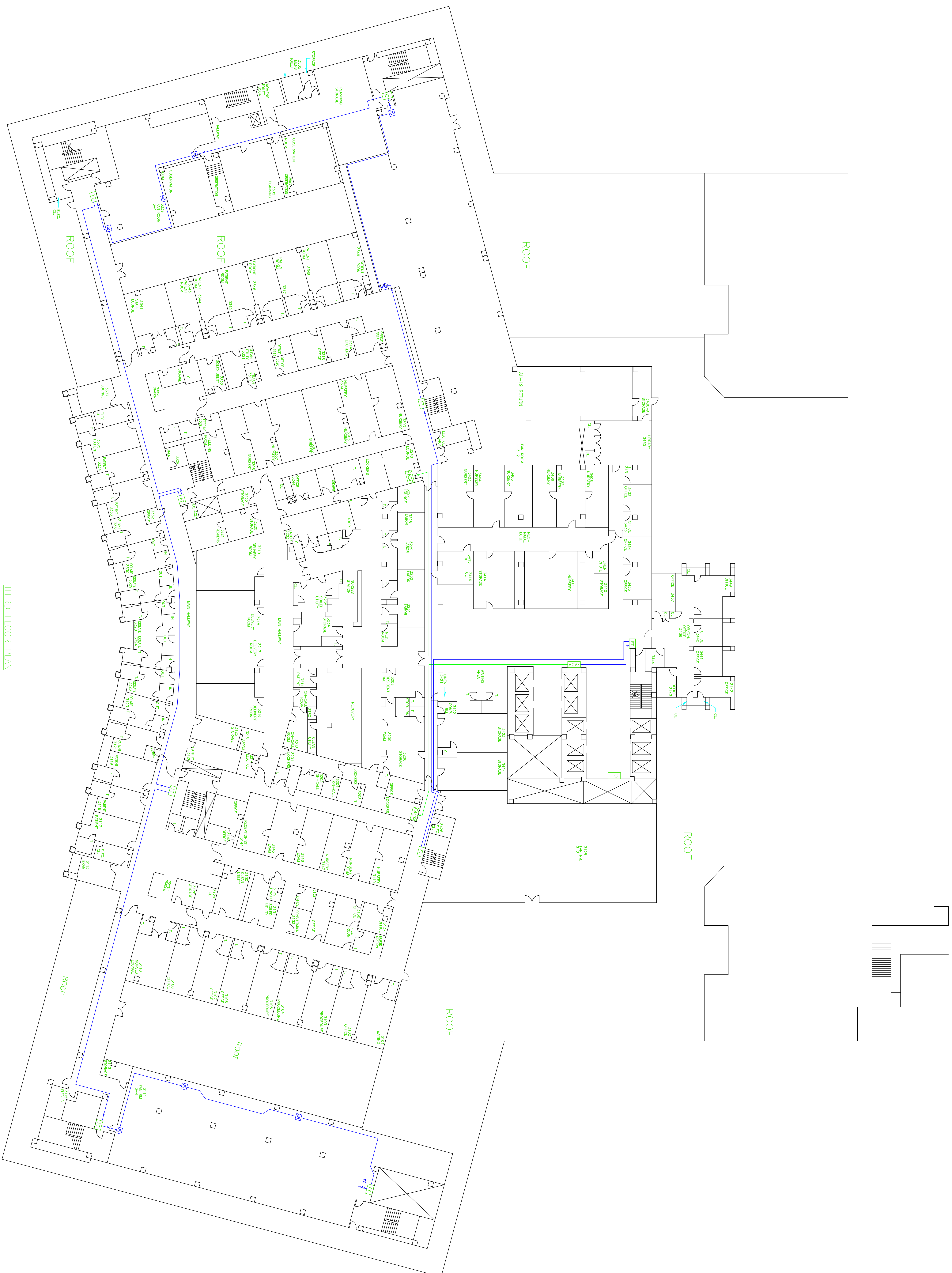


SIGNAL AND CONTROL CIRCUIT CALCULATIONS  
#120 TYPED - MODEL #N

CIRCUIT #	CIRCUIT LABEL	CURRENT	WATS
V3	SIG3 2nd FL. I.C.U.S. & N.E. OPERATING ROOMS	1.42	X
V4	SIG4 2nd FL. RECOVERY & S.E. OPERATING ROOMS	1.47	X
V5	SIG5 2nd FL. SOUTH CENTRAL OFFICES	1.47	X
V6	SIG6 2nd FL. X-RAY ROOMS & E. OFFICES	1.61	X
V7	SIG7 2nd FL. RADIOLOGY FILES & LIBRARY	0.95	X
V8	SIG8 2nd FL. ELEVATOR LOBBIES & N. OFFICES	0.95	X
V9	SIG9 2nd FL. I.C.U.S. OPERATING, & RECOVERY	23.0	X
V10	SIG10 2nd FL. X-RAY, GENERAL, & E. OFFICES	23.0	X
V11	SIG11 2nd FL. LIBRARY, FILES, LOBBIES, N. OFFICES	23.0	X
V12	SIG12 SPARE	X	X
V13	SIG13 SPARE	X	X
V14	SIG14 SPARE	X	X

FIRE ALARM LEGEND

SYMBOL	DESCRIPTION	MODEL No.	SYMBOL	DESCRIPTION	MODEL No.	SYMBOL	DESCRIPTION	MODEL No.
(S)	SMOKE DETECTOR	4098-9714	(F)	MANUAL PULL STATION	2099-9795	(TS)	TAMPER SWITCH-F.B.O.	---
(H)	HEAT DETECTOR	4098-9733	(TC)	TERMINAL CABINET-F.B.O.	---	(EX)	EXISTING SMOKE DETECTOR	---
(W)	WEATHER PROOF HEAT DETECTOR	2098-9490	(FT)	FIRE FIGHTER TELEPHONE	2084-9001	(DH)	EXISTING DOOR HOLDER	---
(T)	SPEAKER/STROBE COMP - 15 CD TAP 3 JUNCTIONS NOTED OTHERWISE	4903-9326	(DM)	INDIVIDUAL ADDRESSABLE MODULE	2190-9172	(F.B.O.)	FURNISHED BY OTHERS	---
(V)	STROBE - 15 CANDLEA	4904-9331	(WR)	WATER FLOW SWITCH-F.B.O.	---	(R)	END OF LINE RESISTOR	---



THIRD FLOOR PLAN  
SCALE: 1/8" = 1'-0"

**tyco** Fire & Security

**SimplexGrinnell**

CONNECTION INFORMATION  
2001 SIMPLEXGRINNELL  
GARDEN, MASS 01441 USA  
35 ARWAY DRIVE  
HARRISBURG, NY 11788  
BRANCH #119

SIZES: (631) 404-1000  
SERVICES: (631) 404-1010  
FAX: (631) 514-0189  
FIRE ALARM: ESTABLISH ACCESS  
SOUND, TONE AND SECURITY SYSTEMS  
CONTROL SYSTEMS: WAKE CALL  
COMMANDS

P.L. STAMP

LIC. BY THE N.Y.S. DEPT. OF STATE  
WORK # (GMA): 973281  
NYS (LIC.) UNIQUE ID#: 12000268653  
EXPIRE DATE: 12/08/2004

ISSUED BY: KE. BIR FIRE MASSAUL'S  
COMMENTS: 8-29-03

MASSAU COUNTY  
MEDICAL CENTER  
2201 HEMPSTEAD TURNPIKE  
EAST MEADOW, N.Y. 11554  
OWNER: CARMAN AVENUE

THIRD FLOOR PLAN  
FIRE ALARM SYSTEM  
FIREPHONE/24V POWER  
DATE: 8-15-00  
DRAWN BY: R.M.  
CHECKED BY: R.M.  
SCALE: 1/8" = 1'-0"  
AUGUST 29, 2002